

500 Series

The D'Angelo 500 Series is suited to most transport applications; with over 30 years of on the road experience this model has more than proven itself - it's a recognised product in the marketplace.



The D'Angelo 500 Series fifth wheel has proven itself time and time again out in the field. With over 30 years of service in the transport industry it is now a well-known product in its own right. The D'Angelo 500 Series is still going strong because its guiding design principles, to be uncomplicated, economic and robust, are just as relevant today as they ever were. The 500 Series comes standard with an easy jaw adjustment meaning that maintenance intervals are fewer and off-the-road time is minimised and productivity is increased.

The 500 Series has also earned a reputation for long life foot bushes, again reducing downtime, and has plenty of oscillation available for those out of the way places.

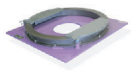
At a glance

- Various mounting heights
- Easy access jaw adjustment bolt
- Automatic safety on release handle
- Press-fabricated top
- Easy side grease access
- Easy access adjustment bolt
- Through-lugs to prevent jaw damage

Mounting Assemblies



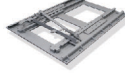
Fixed Plate



Low Profile Ballrace
Double-Row Ballrace



12" Greasy Plate



Fixed Slider Rail
Ballrace Slider
12" Greasy Slider



Double Oscillating

Applications

Stock Crate
Semi-Tipper
Tanker
Low Loader

General Freight
B-Double / Roadtrain

Specifications

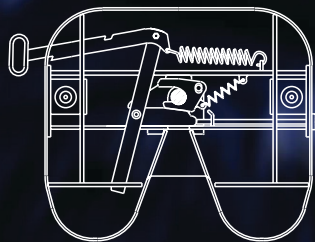
Complies with AS 1773-1990.

Technical Data:

CRN No. 25080
ADR 62/01

D-Value: 165kN
Weight (Top only): 125kg

Locked Position



Released Position

