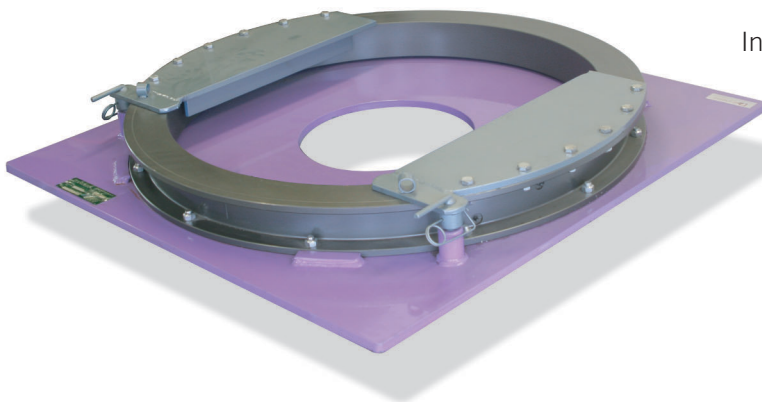


# Ballrace Assemblies

Ballrace assemblies have three main advantages over fixed type assemblies: they reduce wear on all major components, they increase load stability and they improve truck handling.

Having a D'Angelo ballrace assembly reduces wear on the turntable top and skid plate, fifth wheel jaws, kingpin and tyres. The reduced drag between trailer and turntable also improves truck handling and facilitates load stability.



In a ballrace assembly the turntable is effectively locked in position relative to the trailers skid plate by a trailer block. The cost of adding a ballrace is quickly recovered by reduced running costs and off-road maintenance time.

D'Angelo supply a range of high specification steel ballrace rings for use in these assemblies: a low and high profile single row ballrace and a double row ballrace assembly. Each fifth wheel has a selection of options available to it, check each individually or call D'Angelo to discuss the options in detail.

## Fifth Wheel Options



Mini 50



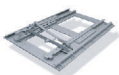
500 Series



Maxi 50



Maxi Heavy Duty



Slider Rail



Loadcell

## Applications

Stock Crate  
Semi-Tipper  
Tanker  
Slide-back Trailers  
Low Loader

General Freight  
Volume Loading  
Mining  
Roadtrain  
Logging

## Specifications

Complies with AS 1773-1990.

ADR 62/01

Technical Data:

Load Rating: 30t (single row)  
50t (double row)

## At a glance

- 30t rated, 60mm Single Row Ballrace
- 50t rated, 90mm Double Row Ballrace
- Easy maintenance through oil points



Maxi 50 on single row ballrace

**The best ballraces in Australia!**

126-132 Fitzgerald Road, Laverton North VIC 3026. Ph: +61 3 9369 0633 Fax: +61 3 9369 4717



# D'ANGELO

[www.dangelo.com.au](http://www.dangelo.com.au)

MINI FIFTHWHEELS • MAXI FIFTHWHEELS • BALLRACES • SLEWING BEARINGS • SLIDERAILS • GREASY PLATES • TRUCK & TRAILER ACCESSORIES